



# **Alverton Governance Structure & Organisation 2017-2018**

## Alverton Governance Structure 2017-2018

### Mission Statement

The Governing Body at Alverton School is committed to:

- improving the opportunities and outcomes for children at Alverton School
- using its individual and collective expertise to help the school to achieve high standards by understanding, supporting and monitoring progress towards the school's improvement targets
- working effectively and efficiently in partnership with the school and the multi-academy trust.
- using the increased freedoms of the MAT structure in order to evolve its work from the traditional governance model towards a sharper and more dynamic focus on school development priorities
- providing a localised and bespoke level of challenge, expertise and support for Alverton School

### Organisational Model

#### Standing Committees

These fulfil specific functions and meet as required.

Standing Committees for: Pay, Head Teacher PM, Pupil Discipline, 1st & 2nd Committees

#### Focus Groups

Governors will work in small **focus groups** to focus on either:

- Current School Development areas and questions
- Standing Items of Governance (Safeguarding, Resources, Premises etc.)

Each of these focus groups will base their work around a **key question**.

Focus Groups will seek to move towards an answer to this key question through a variety of methods including:

- Research
- Meeting staff and pupils
- Meeting with school leaders
- Visiting classes
- Data analysis
- Comparative measurements

The second Full Governors Meeting at each term will provide an opportunity to feedback on the work of the six focus groups. This in turn will link into the school development cycle, enabling all Governors to monitor progress against the targets set, challenging and supporting as necessary.

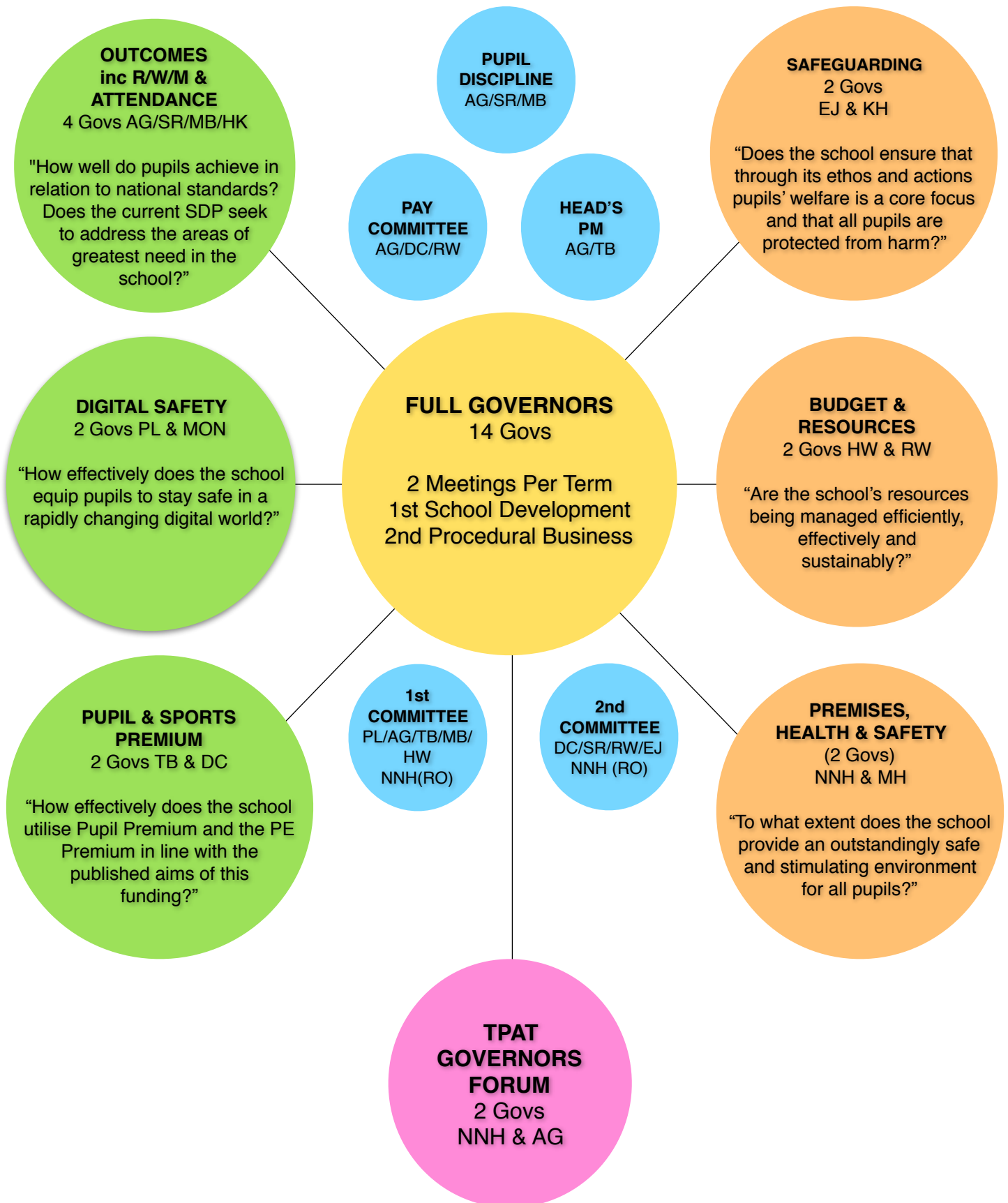
#### Full Governing Body Meetings

Two meetings will be held each term.

The **first** of these will deal with **Procedural Business**; it is assumed that this will reduce as the MAT structure develops.

The second meeting will look at the work of the **Focus Groups**.

# ALVERTON GOVERNANCE STRUCTURE 2017-2018



## GOVERNOR MEMBERSHIP OVERVIEW (SEPT. 2017)

	DC	PL	AG	SR	TB	HK	MH	NNH	RW	KH	MO	MB	HW	EJ
Term ends...	10/20	4/18	10/21	8/20	10/21	8/18	n/a	5/19	9/21	8/18	5/20	9/18	10/21	4/18
Full Govs														
Specific Roles	PE & SPORT PREM				PUPIL PREM	ATTEND.		H&S W'blow						S'GUAR. SEN
Outcomes & Data														
Digital Safety														
Pupil Prem. & PE Prem														
Safeguarding														
Budget & Resources														
Premises H&S														
Pay Comm														
Head's PM														
1 Committee								Review Officer						
2 Committee								Review Officer						
Pupil Discip.														

## GOVERNOR MEETING SCHEDULE (2017-2018)

2017-2018	SEP	OCT	NOV	DEC	JAN	FEB	MAR	APR	MAY	JUNE	JULY
FULL GOVERNORS Development	Weds. 20th 6pm		Weds 29th 6pm				Weds. 21st 6pm				Weds. 11th 6pm
FULL GOVERNORS Procedural			Weds 1st 6pm				Weds. 14th 6pm			Weds. 27th 6pm	
PAY COMMITTEE		Weds. 18th 6pm									
HEADTEACHER'S PM			Thurs 23rd 9.30am								
1st Committee	As Requires										
2nd Committee	As Required										
Pupil Discipline	As Required										