

# Alverton Primary School



## Prospectus 2017 – 2018

## Contact Information

Alverton Primary School  
Toltuff Crescent  
Penzance  
Cornwall  
TR18 4QD



01736 364087

Headteacher: Mr Martin Higgs BA (Hons)  
email: [head@alverton.cornwall.sch.uk](mailto:head@alverton.cornwall.sch.uk)

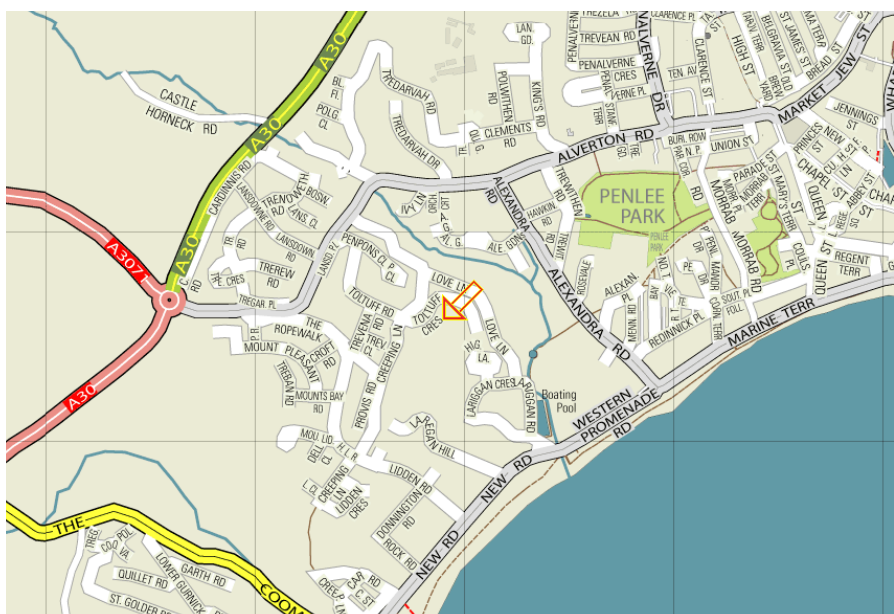
Chairs of Governors: Mrs Nanette Newton-Hinge and Mrs Anna George

School Secretary: Mrs Veryan Gill  
email: [secretary@alverton.cornwall.sch.uk](mailto:secretary@alverton.cornwall.sch.uk)

School Website <https://alverton.eschools.co.uk/>

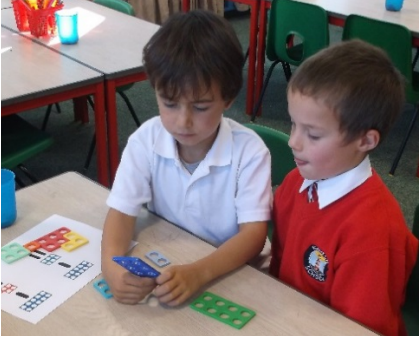
Twitter: @alvertonschool

## How to find us



When travelling from east or west, stay on the A30 until the roundabout signposted to St Just or Penzance. Take the exit to Penzance and take the second turning right (just after the traffic lights). Follow the road through Alverton Estate and take the second turning left into Toltuff Crescent. The school is about 100 metres along on the right hand side.

## Welcome to Alverton Primary School.



At Alverton, we are committed to providing a stimulating, creative environment where everyone feels valued and safe, and pupils can flourish and reach their full potential.

By providing a broad, balanced and engaging curriculum using the REAL project approach, and by promoting good behaviour and respect for all, we aim to enthuse all children with a love of learning and to foster a caring environment for

all.

Whatever the needs of a child, we aim to ensure that our pupils grow, feel safe, have fun and enjoy success. We want our pupils' time at Alverton to be memorable and to encourage them to become lifelong learners. We actively safeguard and promote pupils' welfare and we want everyone in our school community to feel a sense of pride and ownership in what we achieve together in providing the best possible learning opportunities for our pupils.



## Our Vision

### Vision

"Together we learn."

Alverton School will be a safe, happy and respectful environment providing a diverse, exciting and challenging experience to encourage progress towards every child and adult's potential.

### Our Aims

For the school to achieve an outstanding level of provision and outcomes for learners in the majority of assessed learners.



### Leadership and Management

To provide strong, cohesive and effective leadership with a clear direction on improving standards and provision.

To develop distributed leadership at all levels, leading to greater shared responsibility for, and ownership of, the children's experiences and achievements.

### Quality of Teaching, Learning and Assessment

To ensure that children receive teaching that is at least Good and often Outstanding.

To develop and maintain a stimulating, broad and rich curriculum through which children achieve excellence and enjoyment.

### Personal Development, Behaviour and Welfare

To create and maintain a safe and secure environment for the education and care of the pupils in which every child can achieve their best.



## Outcomes

To ensure that all groups of pupils make at least expected progress in Reading, Writing and Maths.  
To raise achievement for all groups of pupils so that they are above national expectations.

## Early Years Foundation Stage

To ensure that children receive outstanding provision in the Early Years Foundation Stage which results in outstanding outcomes for children of all abilities.

## Truro and Penwith Academy Trust (TPAT)

During the Spring and Summer terms of 2017, Alverton Primary School is consulting with stakeholders about joining Truro and Penwith Academy Trust. We are excited by the opportunities this provides for our school as we continue to strive to improve the lives and opportunities for our young people through partnership and collaboration whilst retaining the unique identity, culture and community of our individual school.

## Curriculum

At Alverton, we want to give the children the very best learning experience that we can. We provide a rich and exciting curriculum that promotes independence and opportunities for everyone to succeed. We aim to give children the academic skills they need to allow them to progress confidently into the world and we celebrate their successes in all aspects of school life.



We are very excited about developments in teaching and learning and we now take a **REAL Project**

**(Rigorous Engaging Authentic Learning)** approach which is hugely engaging and designed to ensure that all of our children succeed and love to learn. Children can see the relevance of their learning to the world around them and understand the way that different aspects of their work link together as they investigate an “essential question” across a term.



REAL Projects involve taking a more creative approach towards the planning and delivery of lessons in order to immerse the children in their topic. The knowledge that an authentic audience will see their work provides the motivation to ensure that it is completed to the highest possible standard.

Key aspects of REAL Projects are:

- **Personalised Learning**

At Alverton, we endeavour to find out what interests the children have and how they want to learn. Children have the opportunity to contribute to their learning with ideas for their projects. We plan and design learning opportunities that are relevant and engaging and have real world outcomes.



### ▪ **Project Based Learning**

Children gain knowledge and skills by investigating and responding to an “essential question” across a term. Project based learning involves several skills and stages which are embedded across the curriculum, enabling clear links to be made. The children work towards presenting their work at an exhibition at the end of the term, ensuring that their learning has purpose and an authentic audience.

### ▪ **Environmental Stimulus**

Learning environments take on the appearance of a time, place or event being explored and are changed with every new theme.

Classrooms have a variety of flexible learning spaces, which can be adapted for different lessons and which allow children to make decisions about how they would like to learn.



### ▪ **Challenge Based Learning**

Children apply skills to real-life problems and are encouraged to use a range of resources and approaches; the children start with a challenge and can then make their own choices to solve the problem, often working with others to do so.

### ▪ **Engagement Pedagogy**

The curriculum is planned around a termly theme which drives the children’s learning and the teachers’ planning ensuring an integrated, cross-curricular approach. Themes are complemented by visits / visitors and real-life tasks. Core subjects are integrated into the theme.



From Early Years through to Year 6, we take opportunities to extend the curriculum through visitors including artists, authors and musicians. We are also increasingly using our fast-developing grounds and getting out and about in the locality and the wider environment to explore our essential questions. In addition, we plan educational visits to enhance the children’s learning to places such as Feadon Farm, the museum in Truro, the Minack theatre or St Michael’s Mount.

Please see the Curriculum and REAL Projects sections of our website for more information about the subjects we teach, our topics and the objectives your child will cover in each year.

## **Outdoor Education**

At Alverton School we believe in the importance of learning outdoors. The benefits to children’s wellbeing and the experience of exploring, creating and investigating in a safe and stimulating environment are central to the school’s vision.

Pupils at Alverton School are encouraged to respect their environment, to play safely, co-operatively and with purpose. As a result, pupils are willing to take risks, make mistakes, try again and adapt their plans. We encourage children to be as independent and resourceful as possible through giving them the space and licence to find answers for themselves.

Teachers plan lessons that take full advantage of our beautiful grounds. We are lucky enough to have our own woodland, as well as a separate woodland area for our youngest pupils in the Nursery. In these areas, pupils are encouraged to use natural resources to build, create and invent. The woodland is also used extensively for enrichment opportunities which are planned into the curriculum from treasure hunts to den building as well as cooking over an open fire.

We are currently in the process of revamping the rest of our school grounds and have been lucky enough to work alongside the Education Team at Eden, a landscape architect and a loose parts play specialist who have planned and consulted with pupils, staff and parents to create a five year plan to improve the grounds. We are looking forward to working together to make our playgrounds and classroom areas as beautiful as our school field.



### Homework

We place great importance on reading each day and practicing tables and spellings. In addition, children from Year 1 upwards will have a selection of activities from which to choose each week. Please see our Homework Policy (available on the website) for more details.

### School Clubs and Extra-Curricular activities



Each term we have a wide variety of after-school, lunchtime and before-school clubs for the children to choose from, all of which are free of charge unless run by outside providers. Our programme of clubs and activities is revised termly. If your child has a place in a club, you will be advised of their finish time, and the collection point for your child, by letter.

We take part in many extra-curricular activities and events including a wide range of musical and sporting activities. We are part of the annual Mazey Parade in Penzance and even hold our own Alverton Parade. Our fantastic Drama Club performs a musical each year to the whole school community. There are extensive opportunities for children to be involved in many varied activities beyond the classroom.



### Residential Visits



Years 3 to 6 have the opportunity to spend time at a residential centre during the Summer Term. This helps to develop self-reliance, co-operation and initiative as well as giving the children the chance to experience different activities and environments. These trips are also, of course, great fun!



Our residential visits range from Sleeping with the Sharks at Plymouth Aquarium to camping and outward-bound activities at Porthpean to an unforgettable trip to London including Legoland and a West End show!

### **Charging**

In order to enable certain activities, such as some trips, to take place, it is necessary to invite voluntary contributions from parents. Some of these activities can only take place if parent contributions are available and we endeavour to keep costs to a minimum.

For full details, please see our Charging Policy in the Policies section of the website.



## **Class Structure**

We are allocated up to forty five pupils in each year group. Our classes are arranged in date-of-birth order (except the Reception classes) and our class structure is as follows:

### **Early Years Foundation Stage**

Ducklings (Nursery)

Choughs (Reception)

Robins (Reception)

### **Key Stage 1**

Puffins (Year 1)

Owls (Year 1 and Year 2)

Kingfishers (Year 2)

### **Lower Key Stage 2**

Trencrom (Year 3)

Lanyon (Year 3 and Year 4)

Kerris (Year 4)

### **Upper Key Stage 2**

Bodrifty (Year 5)

Bosigran (Year 5 and Year 6)

Kenidjack (Year 6)



## **The School Day**

### **Ducklings Nursery**

Morning Session: 8.45am to 11.45am

Afternoon Session: 12.30pm to 3.30pm

### **Reception, Key Stage 1 and Key Stage 2**

Start Time: 9.00am (doors open at 8.45am)

Break 10.30am to 10.45am (KS1 and KS2)

Lunch 12.15pm to 1.15pm

Break 2.30pm to 2.45pm (KS1)

School Finishes: 3.15pm

### **Arrival and Dismissal**

Nursery children are taken to, and picked up from, the Ducklings Nursery via the entrance in the Once Upon a Time Nursery. Children in Choughs and Robins (our Reception classes) are dropped off and collected from their classroom through the Reception class entrance (near the main school entrance).

All other children arrive through the hall door each morning. Children should not arrive unaccompanied before 8.45am when the school doors are opened.

At the end of the day, Key Stage 1 children are collected from the steps in the Key Stage 1 playground. Key Stage 2 children are collected from the gate near the woods and the nursery.

### **Travelling to school**

Car parking is not available in the school car park and we advise parents to park in the car park by Alverton Free Church or in Lariggan Crescent. Toltuff Crescent can become very congested at the beginning and end of the school day and we actively discourage parents from driving along it in order to ensure all children's safety.

### **Breakfast Club**

Breakfast Club is available, at a charge of £2.00, from 8.00am to 8.45am each day. Part of our clubs provision takes place during this time and your children can enjoy activities such as circuits and indoor hockey.

### **Tuck Shop**

The children run a tuck shop each day in The Lighthouse, our tuck and book shop. Fruit, or other healthy tuck, may be brought from home and eaten at break time. Fruit is provided for children in Key Stage 1 and the Early Years Foundation Stage.

### **Lunches**

At lunchtime, children can choose to either have their meal in our school canteen or bring a packed lunch. Children from Reception to Year 2 are entitled to a free school dinner if they choose; other children should bring their dinner money in a labelled purse and pay for their lunch each day. Menus are available from the school office.



We place great importance on eating together, good table manners and social interaction.

## School Uniform

All pupils are expected to wear school uniform.

### Children should wear:

- **White** shirts or blouses
- **Red** sweatshirts (school), jumpers or cardigans
- **Grey** trousers (or shorts in the summer term)
- **Grey** skirts, pinafore dresses or culottes
- School tie
- **Red checked** dresses (in the summer term)
- **Plain white, black or grey** socks or **grey or red** tights

**NB** Choughs and Robins wear a red polo shirt and no tie.

All items of clothing should be plain and free from logos etc, except any items incorporating the school badge.

### Shoes:

- **Black shoes** (not boots). All shoes should have a low heel.
- Laces should be **plain black**.
- In the summer, **black or red** closed-toe sandals may be worn (not crocs).

### PE uniform

- **Plain white** polo shirt
- **Plain red** shorts
- Trainers or plimsolls
- In the colder months, it is important that the children are dressed appropriately for outdoor PE and they may wear a school tracksuit for outdoor games.
- PE kit for Choughs and Robins is a red polo shirt, plain black tracksuit bottoms and black trainers.
- On swimming days (Wednesday), Robins and Choughs may wear their school tracksuit.

Ducklings Nursery children should wear a yellow Ducklings t-shirt and red school sweatshirt.

Some items (ties, sweatshirts, tracksuits, PE shorts) are available to buy or order from the office – please ask at the school office for details.

**Please label all school uniform with your child's name.** This is especially important, as uniform items look similar and can easily be confused for another child's. The school cannot accept responsibility for any lost items.

Please note that all items of jewellery, apart from watches, are not allowed. For safety reasons, only stud earrings may be worn and these should ideally be removed for PE or alternatively covered with a



plaster. Long hair should be tied back using plain bands without attachments. Children should not wear any make-up or nail varnish.

## **Inclusion**

### **Special Educational Needs**



As an inclusive school, all children at Alverton will have access to all aspects of school life. Our aim is that any child with additional educational needs will receive the support and provision appropriate for them. Children with SEN will, as far as possible, participate in learning activities alongside their peers, at a level appropriate to them. The curriculum will be differentiated to meet their needs and will be delivered in a variety of ways to reflect these needs. Where there is need for additional support, appropriate provision and / or resources will be provided.

Children with additional learning needs will be identified by (or through discussions with) the class teacher and Mrs Hughes, the Special Educational Needs Co-ordinator for the school.

Our “Local Offer” for Special Educational Needs and Disability is available to download from our website and can be found under Key Information. It contains an extensive list of answers to FAQs.

### **Equality**

We offer equal opportunities to every child in every aspect of school life.

We are committed to ensuring equality of education and opportunity for all pupils, staff, parents and carers receiving services from the school, irrespective of race, gender, age, disability, faith or religion or socio-economic background.

### **Pupil Premium**

The Pupil Premium is allocated to schools to enhance the learning and achievement of pupils who have had free school meals in the last six years, potentially low income families, children who have been looked after by a local education authority and children who were adopted on or after December 2005 or were placed on a Special Guardianship or Residence Order immediately after being looked after.



The Government believes that the Pupil Premium, which is additional to main school funding, is the best way to address the possible inequalities between children eligible for free school meals (over the last six years) and their peers by ensuring that there is funding to support these pupils. There is also additional funding for students who have one or both parents in the armed forces. This is to ensure that they are provided with support at a potentially emotionally difficult time of their lives and to ensure that they make at least expected progress.

For details of how our Pupil Premium money is spent, please see the Pupil Premium section of our website (under Key Information).

If you think your child may be eligible for Pupil Premium, please ask at the school office.

## School Behaviour



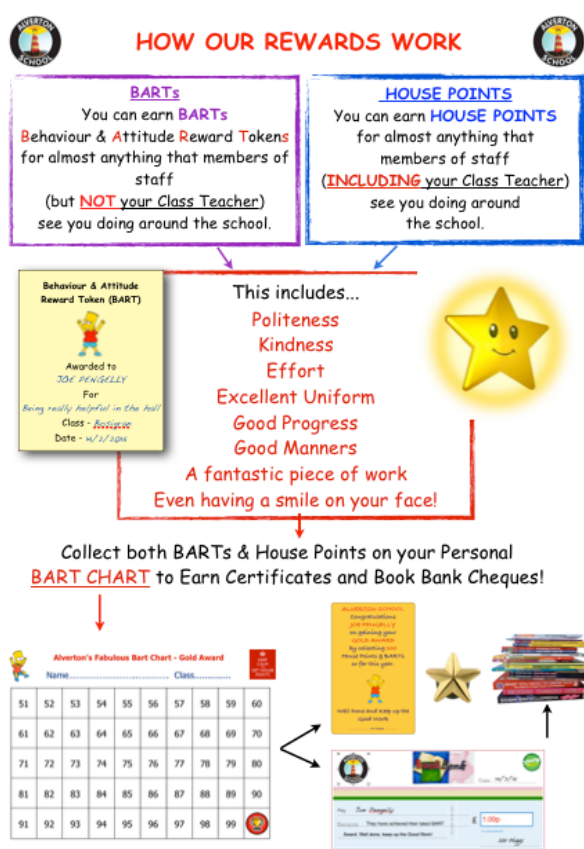
Our school has a positive behaviour policy. The aim of the policy is to reward good behaviour and incorporate a clear, simple set of rights and responsibilities (the Alverton Code) which apply to all members of our school community. Where necessary, we employ a transparent and appropriate range of sanctions to deter unacceptable behaviour. Staff work closely with parents when behaviour is unacceptable. A full copy of the school's behaviour policy can be found in the policies section of our website.

### THE ALVERTON CODE

All members of this school community, both adults and young people, have the right to:

- Learn and teach to the best of our ability.
- Be safe, secure and happy.
- Be treated with consideration, courtesy and respect.
- Take a pride in ourselves, our achievements and our school.
- Try our best at all times in everything we do.
- Be treated equally with honesty and fairness.

We understand that for every right we own, we have an equal responsibility to ourselves and the rest of our learning community.





## **Anti-Bullying**

All forms of bullying are unacceptable at Alverton School. We work hard to ensure that all members of our school community are empowered to take a proactive approach to any type of bullying which has been identified or reported and we pride ourselves on ensuring that this is investigated and addressed immediately in a thorough and robust manner.

## **Safeguarding**

Alverton Primary School is committed to Safeguarding and promoting the welfare of children and young people. The highest priority will be given to following guidance and regulations to safeguard them. All adults employed in the school or working as volunteers are required to undergo a DBS (Disclosure and Barring Service) check.

The health, safety and well-being of every child is of paramount importance to us. We listen to our pupils and take what they tell us seriously. Our aim is that children enjoy and achieve in their time as pupils at this school. Our safeguarding provision involves:

- Establishing and maintaining an environment where children feel secure, are encouraged to talk, and are listened to.
- Ensuring that children know that there are adults in the school who they can approach if they are worried.
- Including opportunities in the curriculum for children to develop the skills they need to recognise and stay safe from harm or abuse.

We want to work in partnership with parents and carers to help your child to achieve their full potential. If we have any concerns as to a child's welfare, we will endeavour to be open and honest with you and to meet with you to discuss the matter. The school will seek to work with parents to address potential child welfare issues e.g. to address concerns with attendance or to seek clarification over bruising or injuries.

We will, where appropriate, inform parents of any decision to make a referral to the Multi-Agency Referral Unit. However, if we are unable to inform parents directly, this will not prevent a referral being made. On rare occasions, there are circumstances in which concerns should not be shared with parents and a direct referral would be made to protect any of our pupils.

The procedures which we follow have been laid down by the Cornwall Safeguarding Unit and the school has adopted a Child Protection Policy in line with this for the safety of everyone. If you want to know more about our procedures or the policy, please speak to the Headteacher or your child's class teacher. Mr Martin Higgs (Headteacher) is the school's Designated Safeguarding Lead.

### **The Prevent Strategy**

The Government has published guidance for authorities, including schools, on their responsibilities under the Counter-Terrorism and Security Act, which came into effect on 1 July 2015. Under the Act, schools and other authorities have a duty to "have due regard to the need to prevent people from being drawn into terrorism". We have written a Preventing Radicalisation Parent Guide to provide you with more information about this and further details and information can also be found on the Prevent pages

(part of the Safeguarding section) of our website. Mr Higgs is our Single Point of Contact for the Prevent Strategy.

### School Security

We have a comprehensive security system and require all visitors to school to report to the school reception before entering the main building. We welcome many visitors, but all must sign in and wear an identification badge. All staff wear named badges with photo ID.

### Health

- If there is a change in your address or telephone number, please inform the office as we may need to contact you in an emergency.
- Please telephone or send a note if your child is suffering from any **infectious** illness.
- Please inform us if your child has **nits** or **head lice**.
- First aid is given in the event of an accident, but if a doctor's or hospital visit is thought to be necessary, you will be contacted where possible.
- Please inform us if your child suffers from asthma.
- The school cannot give medicines unless parents fill in a form. The form is available at the office.
- Please bring the exact dose in a sealed container. We do not administer aspirins.
- Please contact the school if you have any worries about your child's sight, hearing or speech development, as a problem with any of these could affect your child's school work.

### Medical / Dental Visits

Written notification is required if a child has to leave the school premises for a medical or dental appointment. Parents must report to the office and your child will be brought to you in reception.

### Emergencies

First aid equipment is kept throughout the school and the majority of staff are trained in First Aid procedures.

It is very important that the office has your telephone number at home and at work, or an alternative method of contacting you should the occasion arise.



### Attendance

Children should be at school, on time, every day the school is open, unless the reason for the absence is unavoidable. Permitting absence from school without a good reason is an offence by the parent.

Please note that **the school does not ordinarily authorise holidays in term time**. Please contact Mr Higgs to discuss any request for removing children from school during term time.

If your child has to leave school early for any reason, please inform the class teacher in advance and make sure the child is collected from reception. No child should leave the school premises during school hours unless accompanied by a parent or an authorised adult.

**If your child is unable to attend school** for any reason, please contact the school office on **01736 364087** before 9.30am (ideally before 9am in time for registration) on the first day of absence. If we do not hear from you we will contact you. Unexplained absences will be classed as unauthorised.

Please see our Attendance Policy (in the Policies section of our website) for more details.

### **Punctuality**

The school day begins at 9am and we ask that children arrive promptly to ensure a positive start to their learning. Please ensure that your child is not late for school. Children who arrive late report to the school office on arrival. Any late attendance is recorded on the end of year school report to parents.

## **Admissions**

Alverton Primary School is a member of the Local Authority's co-ordinated admissions schemes for primary school places and in-year admissions.

All applications for places at the school must be made direct to the Local Authority.

Full details of how to apply for a place can be found in our Admissions Policy in the Policies section of our website.

### **Starting School**



There is a separate booklet about the Nursery that is available on application to the school office.

If your child is allocated a school place, they may join Alverton at the beginning of the September after their fourth birthday. Visits to the main school are arranged so that children starting school can spend some time in their new class with their new teachers. A separate pack full of information is given to the parents of all children who are new to our Reception classes.

### **Transfer to Secondary Education**

We have close links with all the local secondary schools. The children transfer in the September following their 11<sup>th</sup> birthday. Members of staff from each of the schools visit Alverton and meetings for parents and children are organised during the pupil's final year at our school.

Our local secondary schools are Humphry Davy School, Mounts Bay Academy and Cape Cornwall School.





# Communication

## Newsletters

The Friday News keeps everyone up-to-date with things that are happening at the school and with important notices and information and is emailed to parents every Friday.

## Yearly Planner

At the beginning of each term we send parents our Yearly Planner which contains key dates for the academic year. This will hopefully help you to plan your calendar and be well prepared for events. There will inevitably be new events as the year progresses, and we may have to change dates where the need arises but we will let you know of these as soon as possible.

## School Website

We aim to keep the website <https://alverton.eschools.co.uk/> as up-to-date as we can. Each newsletter will be published on the site as will the Yearly Planner.



## VLE (Virtual Learning Environment)

This is part of our school website; log ins will be provided for parents which will enable you to access this part of the site and the information relating to your child and their class.

## Letters

If events such as trips are planned, letters will be sent out in advance with details of these. There will sometimes be a form for completion and return in order for your child to attend.

## Meetings

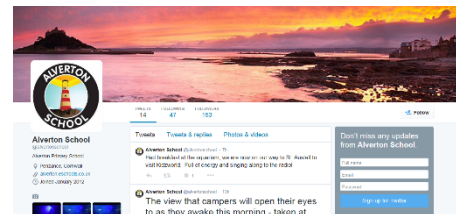
In addition to Parent Consultation meetings, when your child's progress at school is discussed, we will hold meetings to tell you about key events such as camp.

## Text Messaging

We use a text messaging service. If we have your current mobile number, we can send a text with the latest information and reminders direct to your phone.

## Twitter

The school operates a Twitter account to keep people up-to-date with the exciting things going on at school. Parents who wish to use this to gather the latest news updates from us can do so by following us @alvertonschool.



## Keeping in Touch

Parents are always very welcome to visit the school and we hope you will be able to support us. We are always happy to speak with you at a mutually convenient time and the best time to meet with teachers is often after school as teachers are very busy at the beginning of the day. Your involvement is very important to your child and us. Sometimes a small thing that is worrying you or your child can be sorted out immediately and save a lot of anxiety. If you have any doubts or queries about any aspect of the school, please do not hesitate to speak to your child's teacher, the office or the Headteacher.

## Parent Guides

We provide a series of Parent Guides which tell you everything you need to know about different aspects of the school from Uniform to Assessment or Homework to Volunteering. These are available in the school reception or can be downloaded from our website.

### **Complaints, Concerns and Queries**

We hope that you and your child will be very happy with Alverton School. However, from time to time you may find that you have a concern or query. These can usually be best resolved by having a discussion with the class teacher or Headteacher at the earliest opportunity so do not hesitate to come and see us if you have any worries. Our Complaints Policy, detailing what to do if we are unable to find a satisfactory solution, is available to read on our website.

## **Getting Involved**

There are a number of ways to get involved with the school.

### **School Governors**

School governors are people who want to make a positive contribution to children's education. Governors are one of the largest volunteer forces in the country and have an important part to play in raising school standards. School governors provide strategic leadership and accountability in schools. They appoint the Headteacher and are involved in the appointment of other staff, as well as holding the main responsibility for finance. The Governing Body works with the school on its aims and objectives and is a source of challenge and support to the Headteacher.

A full list of governors (including the parent governors) can be found on the school website.

If you are interested in becoming a governor, please contact Mr Higgs (Headteacher) or Mrs Newton-Hinge or Mrs George (joint Chairs of Governors) to ask about any vacancies and to find out more about what the role involves.

### **The Friends of Alverton School (FOAS)**

We have an active Friends of Alverton School and all parents are members. FOAS provides invaluable support to the school through organising fundraising events such as the Summer Fair, discos and the Duck Race. Money raised provides extra facilities and equipment for the pupils and enables us to enhance their school experience. FOAS needs the support of parents to ensure it is able to continue to enrich the lives of the children and we would encourage you to get involved as it is also a great way of feeling part of our school community.

### **Volunteers**

We always welcome parents and carers into the classroom and are particularly grateful to those parents and grandparents who come regularly into school to listen to children read. They really do make an enormous difference.

If you are interested in becoming a volunteer, please make an appointment at the school office to see Mrs Hughes, our volunteer co-ordinator.

All parent helpers/volunteers are subject to a DBS check.

## The School's Performance Information

### National Curriculum Assessment and Test Results 2016

Key Stage 2	
% achieving age-expected standards in Reading, Writing and Maths	65
% achieving age-expected standards in Reading	67
% achieving age-expected standards in Writing	85
% achieving age-expected standards in Maths	91
% achieving age-expected standards in Spelling, Punctuation and Grammar	85
% achieving higher standards in Reading, Writing and Maths	22
% achieving higher standards in Reading	26
% achieving higher standards in Writing	26
% achieving higher standards in Maths	37
% achieving higher standards in Spelling, Punctuation and Grammar	35
Progress Measures (NB the average national progress measure is 0)	
Reading	-0.28
Writing	+1.87
Maths	+3.33

For further details, please follow this link <https://www.compare-school-performance.service.gov.uk/school/142240>

### Ofsted

Our latest Ofsted inspection took place in June 2014 when we were judged to be a **Good** school.

The full report can be found at <https://reports.ofsted.gov.uk/inspection-reports/find-inspection-report/provider/ELS/111806> or can be downloaded from our website.



